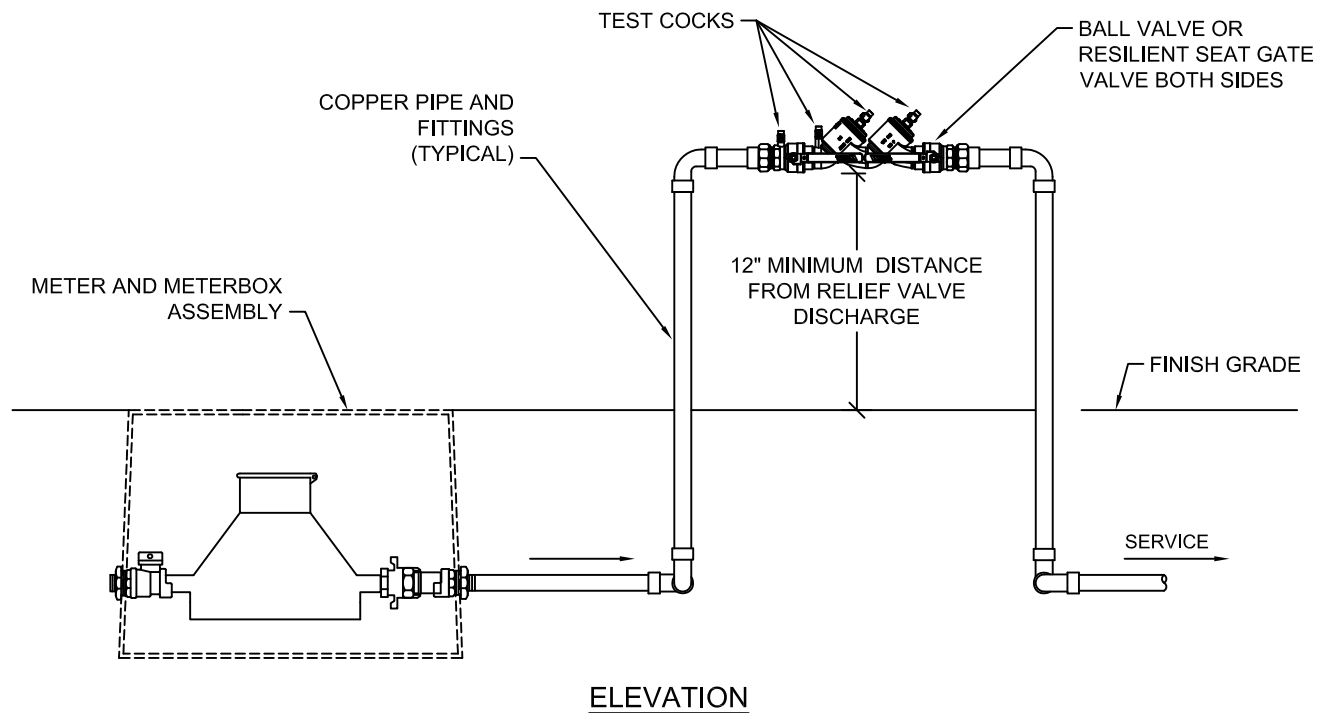
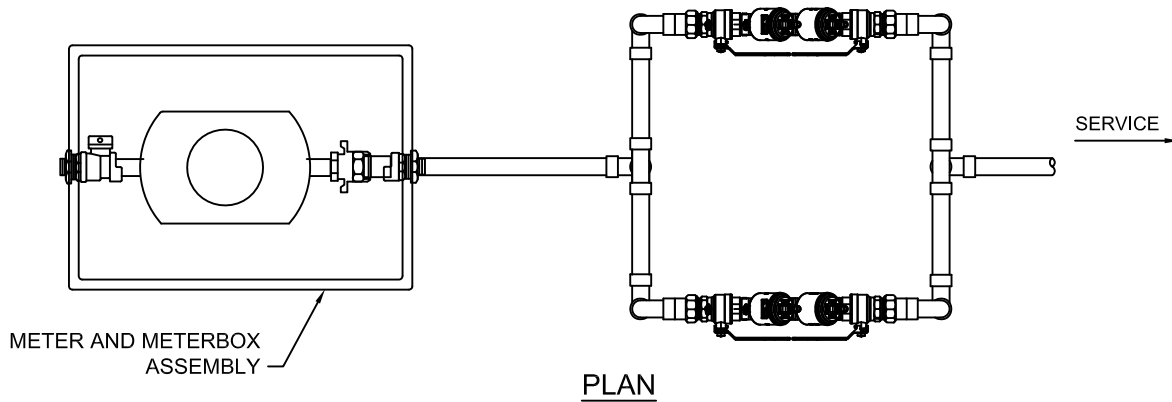


DOUBLE CHECK VALVE BACKFLOW ASSEMBLY FOR 3/4", 1", 1-1/2" AND 2" PARALLEL INSTALLATIONS



NOTE:

1. ALL BRASS FITTING MATERIAL INSTALLED SHALL CONTAIN NO LEAD IN ACCORDANCE WITH THE CURRENT DRINKING WATER STANDARDS
2. PARALLEL BACKFLOW DEVICE INSTALLATIONS SHALL BE USED WHERE CONTINUOUS FLOW IS REQUIRED DURING SERVICING AND /OR TESTING, OR WHERE GREATER CAPACITY THAN A SINGLE UNIT IS NECESSARY.

DOUBLE CHECK VALVE BACKFLOW PREVENTION ASSEMBLY

JUPITER UTILITIES
BACKFLOW PREVENTION PROGRAM DETAILS

DATE APPROVED:
10/2013

DRAWING No. CC-4