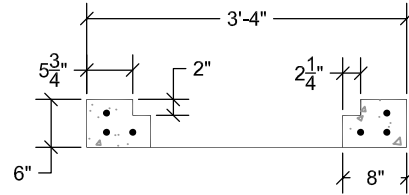


PLAN

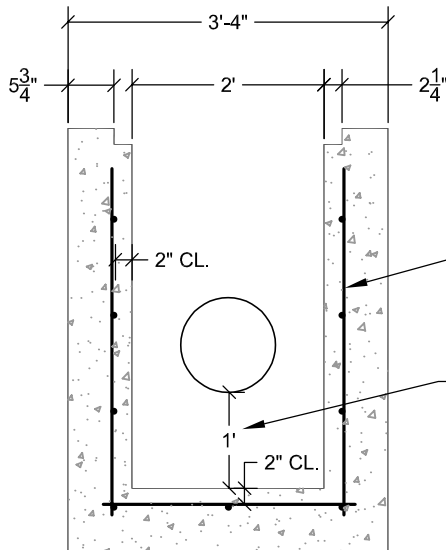


COLLAR SECTION

CAST IRON U.S. FOUNDRY FRAME/GRATE:
 DIRECT TRAFFIC AREAS
 STD 4155-6210
 HD 4155-6212

DITCH BOTTOM INLETS FOR PEDESTRIAN/BICYCLE TRAFFIC:
 CONCRETE COLLAR/STEEL GRATE (NOT IN ROADWAY)
 STD 6610
 HD 6212

DITCH BOTTOM INLET:
 CONCRETE COLLAR/STEEL GRATE (NOT IN ROADWAY)
 STD 6210
 HD 6611



SECTION

#4 BARS AT 12" OCEW

PROVIDE 1 FOOT SUMP BELOW
 INVERT OF PIPE

NOTES:

1. DISTANCES BETWEEN STRUCTURES SHALL NOT EXCEED 300 FEET FOR PIPES LESS THAN 24" IN DIAMETER.
2. DISTANCES BETWEEN INLET STRUCTURES SHALL NOT EXCEED 400 FEET FOR PIPES 24" DIAMETER OR LARGER.
3. METAL FRAME AND GRATE SHALL BE USED IN ASPHALT AND CONCRETE AREAS. ROUND BOTTOMS MAY BE USED.
4. INSTALLATION OF ALL PIPE AND STRUCTURES MUST MEET THE BEDDING, INSTALLATION AND BACKFILL REQUIREMENTS FOR NEW STRUCTURES AND PIPE ON DETAIL SW-5.
5. STRUCTURE SHALL CONFORM TO ASTM C913.

NOT TO SCALE

TYPICAL "C" INLET DETAIL

JUPITER UTILITIES
 CONSTRUCTION STANDARDS AND DETAILS

DATE APPROVED:
 07/2017
 DRAWING No. SW-2