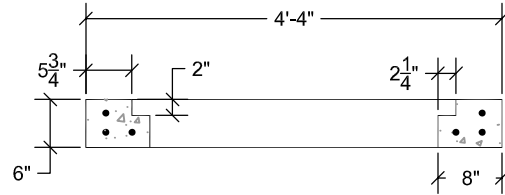


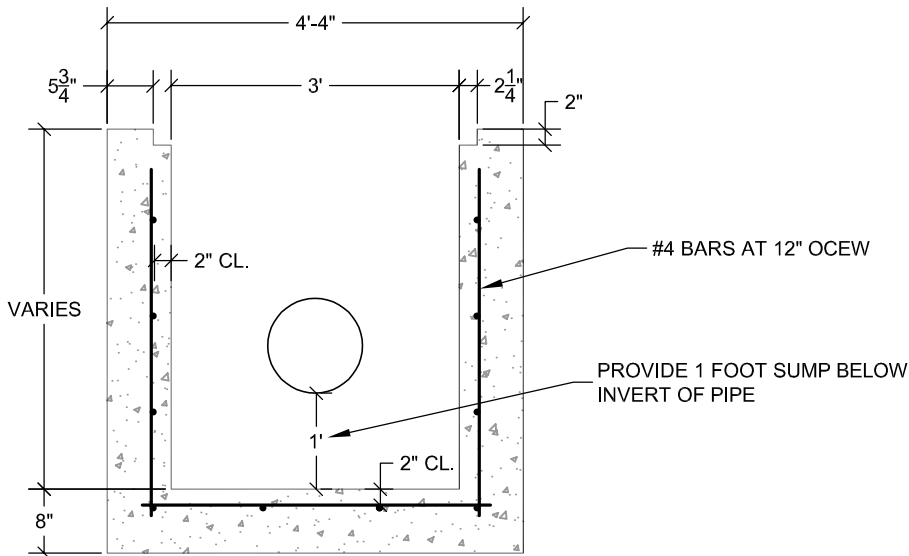
PLAN



COLLAR SECTION

USE U.S. FOUNDRY DITCH BOTTOM INLET:  
 CONCRETE COLLAR - CASE IRON GRATE (NOT IN ROADWAY)  
 STD 6300  
 HD 6290

FOR PEDESTRIAN/BICYCLE TRAFFIC:  
 CONCRETE COLLAR - STEEL GRATE  
 STD 6615  
 H20 LOADING 6616



SECTION

NOTES:

1. DISTANCES BETWEEN STRUCTURES SHALL NOT EXCEED 300 FEET FOR PIPES LESS THAN 24" IN DIAMETER.
2. INSTALLATION OF ALL PIPE AND STRUCTURES MUST MEET THE BEDDING, INSTALLATION AND BACKFILL REQUIREMENTS FOR NEW STRUCTURES AND PIPE ON DETAIL SW-5.
3. STRUCTURE SHALL CONFORM TO ASTM C913.

NOT TO SCALE

TYPICAL "E" INLET DETAIL

**JUPITER UTILITIES**  
 CONSTRUCTION STANDARDS AND DETAILS

DATE APPROVED:  
 07/2017  
 DRAWING No. SW-3